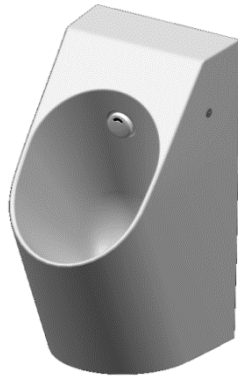


TOTO

Wall-mounted Automatic One-piece Urinal

USWN925B
USWN925BE
USWN925BS

USWN925B(DC)
USWN925BE(AC)
USWN925BS(Sanitizing Technology)

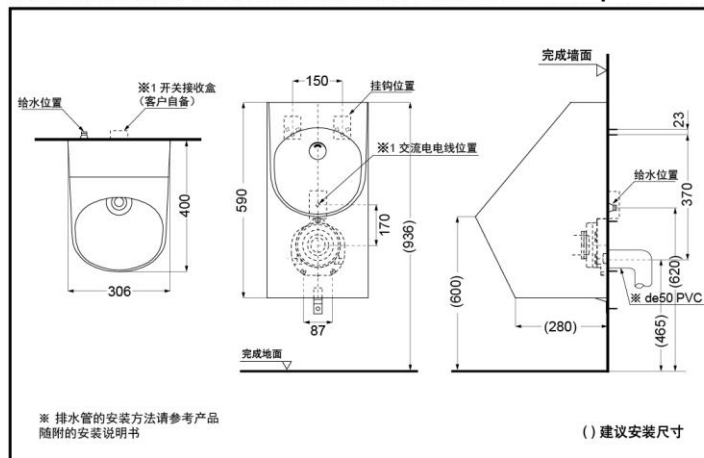


FEATURES

- Integral design of inductor and urinal building more stylish public space
- Carrying sterilized water can inhibit the adhesion of dirt in urinal trap.
- Automatic flushing for 2 hours can inhibit the adhesion of urinary stones in the horizontal drainage pipe of urinal.
- With CeFiONtect and smooth surface exceeding nanometer-class designed for providing , no gap to contain adhered stain and ensuring easier cleaning , without need of excessive water and cleaning agent
- Inductive flush without contact during the whole process, secure and sanitary for use.
- Interval flush with sanitizing flush keeps easy maintenance for drainage pipe.
- Control part located on the top of the product, easy for maintenance.

*Sanitizing Technology (Ewater+) only for USWN925BS

USWN925B/USWN925BE/USWN925BS Wall-mounted Automatic One-piece Urinal



* TOTO公司保留对其产品规格和尺寸更改的权利。届时，恕不另行通知。

TOTO(CHINA) CO.,LTD. All rights reserved.

SPECIFICS

- Size:** 306*400*590mm
Nominal water consumption: 0.5L
Water efficiency grade: Grade 1
Water supply: 0.07MPa(Dynamic Pressure)~0.75MPa(Static Pressure)
Power: USWN925B:Alkaline batteries
USWN925BE/BS:220V (50Hz)
Water inlet model: Rear water spout
Sensing distance: 650mm away from the front of inductive window
Installation: Wall-mount