

安装公司工作人员注意 递交给客户前，请在保证书中填入公司名称、安装日期。

一、安全上的注意事项

请认真阅读「安全上的注意点」后，正确使用。阅读后，请务必妥善保存，以便随时取阅。搬运时，为了使之后迁入的人能够安全的使用本产品，请将此说明书移交。

标志的意思说明如下：

- 禁止 请勿在产品附近使用灯油、汽油、挥发油等可能引起火灾的物品。否则可能引起火灾。
强制实行 产品在需要安装或移动时，请委托销售店、安装施工队或者专门人员。自行进行安装或移动时，如有不周到会导致漏水，可能会弄脏或腐蚀家庭财物。
禁止 请勿使用60℃以上的热水。否则可能造成产品寿命缩短、易损坏、烫伤，以及由于漏水造成家庭财产损失。
强制实行 使用清洗剂后，请在5分钟以内彻底清洗。清洗剂滞留在产品内可能导致变色、出现裂纹。
禁止 请勿放置易锈物品。产品内放置的剃须刀等易锈物品，一旦出现生锈很难去除。
禁止 产品上滞留化妆品时，请马上用水清洗。若洁面乳、发膏、染发剂等滞留，产品可能损伤、变色。
禁止 请勿撞击电镀品或使之跌落。电镀层破损可能导致受伤，万一镀层破损，请立即更换新的配件。
禁止 请勿使水溢出洗面器。溢出的水漏到浴室外，可能给其他房间带来损失（发霉、壁纸剥落、地板损坏等）。
禁止 请勿将香蕉水及腐蚀性溶液倒入产品排水口。否则可能导致排水管溶化、漏水。
禁止 请勿使用气化类的含氯防腐、洗淨剂。因为水、湿气等可能导致不锈钢等金属以及橡胶的腐蚀、老化。

二、使用上的注意事项

请勿使用此产品原装零件外的配件。否则可能导致事故。

三、关于废弃的处理

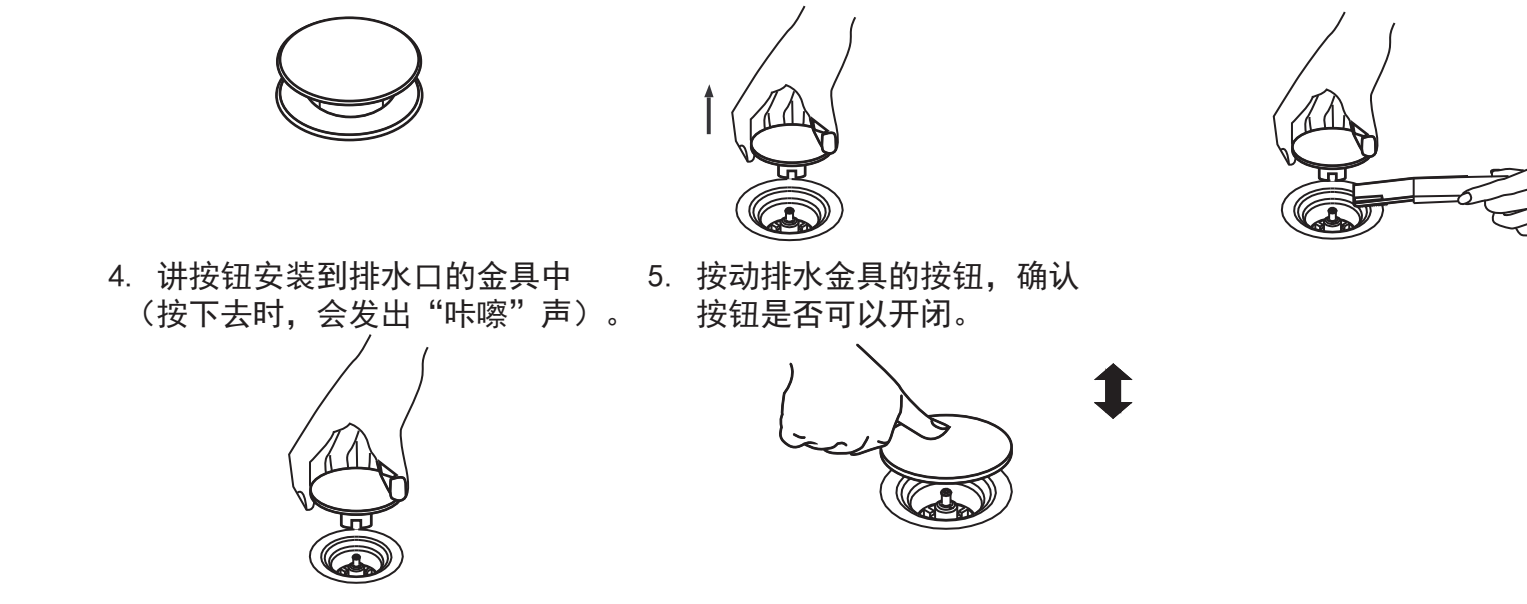
请与生活垃圾分开，作为工业垃圾废弃。

四、排水金具的使用

注水时 每按一次排水口的部件 开启关闭一次 排水时 注意：1. 请勿将异物混入排水按钮。2. 如果水栓处混入异物，请及时清除。3. 如果频繁按起排水按钮，可能导致按钮弹出。若发生此类情况，请参考保养，将按钮重新安装。4. 请勿让水栓金具受到强烈冲击。5. 请勿让化妆瓶等硬物撞击水栓。6. 使用时请在按钮中心处进行按压，否则有可能导致水栓打不开。

五、保养

- 1. 洗面器的保养：* 时间越长污垢越难清除。* 使用后在产品湿的情况下保养，污渍较易清除。请保持产品清洁，经常保养。* 请用沾有中性清洗剂的柔软抹布或海绵清洗，5分钟以内冲洗、擦干。如果清洗不干净，请用五清粉。
2. 排水金具的保养：* 保养前，请用柔软的干布将水汽擦去。* 若是轻微污垢，请先用柔软的布或海绵蘸上专用中性洗涤剂进行清洗。* 顽固的污垢，请用酒精擦拭。* 在清洗时，请务必按照洗涤剂容器上表示的注意事项进行清洗；* 标有“酸性”、“碱性”的洗涤剂、稀释剂或药品，以及含有粗颗粒、研磨粉、尼龙刷、砂皮等请勿使用
保养的注意事项：1. 按动按钮至打开状态。2. 将按钮垂直上提，将其取出。3. 积存在按钮及排水口的垃圾，请用刷子等清除，然后用布擦干。



保证书 本书是对所记载的内容进行免费修理的保证。在保修期内如发生故障，请出示本保证书以要求代理店、安装公司或东陶（中国）有限公司维修。（不明之处，请与本公司客附联系）

Table with columns for Customer Name, Address, Phone, Model, Purchase Date, and Warranty Period. It is used for recording customer information and warranty details.

- 〈免费修理规定〉 1. 当您按照使用说明书标签上的注意事项正确使用而发生故障的情况，在如表所记的时间内进行免费修理。 2. 在保修期内发生故障进行免费修理时，委托代理店、安装公司或东陶（中国）有限公司的同时将本书提示给修理人员。 3. 如您搬迁，请妥善转交使用说明书。 4. 即使在保修期内，以下的情况也要有修理费。 A. 因使用不当，误操作引起的不良情况及不正当的修理、改造而造成的故障及损伤。 B. 在安装完毕后又再行移动而引起的故障及损伤。 C. 由火灾、地震、水灾、雷击、冰冻及其它的天灾地害，公害及气体受害（有害气体）盐酸、异常电压引起的故障及损伤。 D. 使用指定外的燃料、电源（电压、周波数）及异常水质引起的故障及损伤。 E. 因淤积的沙土、污物而产生的使用不良及包装等易耗品的损伤。 F. 其他施工的失误所造成的损伤。 G. 管理不当造成的污物水锈等。 H. 无本保证书的情况。 5. 本保证书只在中国境内有效。 6. 本保证书不再发行，请认真保管，切勿遗失。 本保证书是对本申明记的时间、条件下进行免费修理的保证。因此，此保证书不是作为限制客户在法律上权利的东索，对保证期过后的修理等问题有不明时，请查询东陶（中国）有限公司。 生产部：南京东陶有限公司 地址：南京市江宁经济技术开发区董村西路2号 东陶（中国）有限公司 全国售后服务电话 固定：800-820-9787（免费） 手机：400-820-9787 沿虚线剪切下来，安装说明部分交予客户保存。

晶雅洗面器 PJS01W/PJS02W/PJS03W/PJS04W 感谢您选用TOTO的晶雅洗面器。为了充分发挥产品功能，请接本说明书内容正确安装。安装完成后，请向客户说明操作方法，并将本说明书交由客户保存。

一、安装前注意事项

- 1. 安装前，关闭水源，且预留进水、排水管。 2. 安装台面厚度建议在8-35mm之间；台面距地面高度建议在820mm。
●安全起见，请务必遵守 请详细「安全上的注意点」后，正确安装。为了安全、正确的安装产品，防止给您或他人造成人身伤害或财产损失，本说明书采用了很多标志。标志的意思说明如下。
表示 注意 此图表示不可行、「禁止」之意。 表示必须「强制」实行的内容。

注意 洗脸盆上不可有重物落下 否则会造成洗脸盆破损，导致洗脸盆漏水，而造成财产损失。 请不要予与洗脸盆较强的力量和冲击力 否则会造成洗脸盆破损，导致洗脸盆漏水，而造成财产损失。 请按照施工说明书正确安装 施工上的疏忽，可能由于漏水造成家庭财产损失。 缓冲衬材、固定按钮等安装时，由洗脸盆上面向下安装时，要铺上瓦楞纸、纸板等，以防洗脸盆破损。

二、部品清单

Table listing parts and quantities: 洗面器本体 (1个), 固定部件 (4个), 连接部件 (各1个), 安装、使用说明书 (1页), 合格证 (1页), 排水金具 (1个).

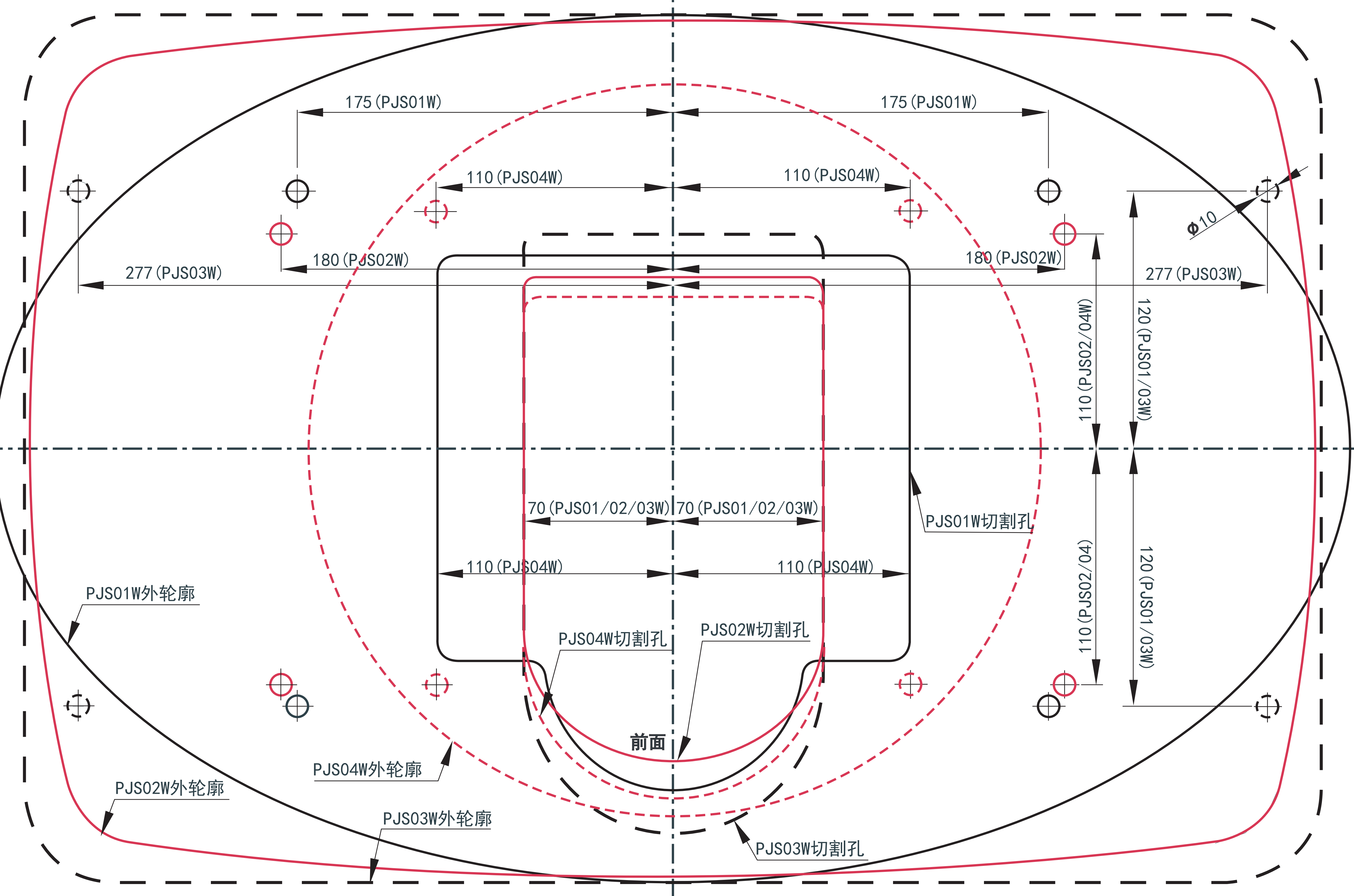
三、规格尺寸

Table with specifications for models PJS01, PJS02, PJS03, and PJS04, including dimensions, weight, color, and material.

三、安装步骤

3-1、沿着虚线剪下切割图、安装说明书。 3-2、洗面器排水金具与水管的连接。 3-3、洗面器安装台面。 3-4、进水管和排水管的安装（客户自备）

洗面器切割图



注意：纸张印刷过程中有误差，固定孔的位置，参考上图定位的同时，需要测量确认。

TOTO 智能卫浴专家

感谢您选择了我们

舒适到家----使世界上所有的人们，每天生活在清洁、舒适的环境中。这是TOTO的信念。无论从外观到内部构造都引导着时代潮流，感谢您选择了我们。

沿虚线剪切下来，安装说明部分交予客户保存。 注意：1. 水龙头进水口与进水管连接时，应保证进水管不扭曲，与螺母连接牢固。 2. 冷热进水管连接勿颠倒。 ①、进水管和排水管连接要牢固。 ②、安装完成后，用软布擦洗干净洗面器表面、水龙头及排水金具。

Notice for staff of Installation Company Please fill in company name and installation date prior to submit to customer.

Important Safety Instructions

Please carefully read the "Safety precautions" for proper application. Please keep the manual well for reading at any time. When moving, this manual shall be transferred to new customer for safe application of the product.

The marks are described as follows:

Symbol	Meaning
	The symbol means "Forbidden".
	The symbol means "Enforced".
	Never use lamp-oil, gasoline and volatile oil etc. Otherwise it may cause fire.
	When installing and moving product, please entrust sales shop, installation team or professional person. Self installing and moving product may cause fire or shock. In addition, water leakage may contaminate and corrode family property.
	Otherwise it may decrease the life of product, damage or injury. Water leakage may also cause the loss of family property. Never use hot water over 70°C.
	After cleaner is used, please thoroughly wash it within 5min.
	Cleaner remained in product may discolor and crack.
	Never place rusty articles.
	Hairpin and shaver placed in product may cause hardly-removed rust.
	Please immediately wash cosmetics remained in product with water.
	Face cream, hair cream and hair dye may cause damage and discolor.
	Never crash electroplate or let it fall off. Damage of electroplated coating may cause injury. Please immediately replace new part in case of damage of electroplated coating.
	Never let water overflow from wash-basin. Water overflowed outside bathroom may cause loss in other rooms (such as going mouldy, wallpaper falling-off or floor damaging etc.).
	Never pour banana oil into drain hole of product.
	Otherwise, it may cause dissolution and leakage of drain pipe.
	Never use gasified chlorine mold-proof cleaner.
	Otherwise, water and moisture may cause corrosion and aging of stainless metal and rubber.

Notice for application

Only original parts of the product can be used. Otherwise, it may cause accident.

Disposal of waste

It shall be disposed as per industrial waste rather than household waste.

Application of draining fittings

Filling water close

Draining water Open

Note:

- Foreign matters shall not be mixed into draining button part.
- Please timely remove the foreign matters mixed into water-plug.
- Draining button may be ejected if the button is frequently pressed.
- Water-plug fittings shall not be strongly impacted.
- Water-plug fittings shall not be crashed by hard objects such as cosmetic bottle etc.
- Please press button center during application. Otherwise, water-plug may not be opened.

Maintenance

- Maintenance of wash basin
 - The longer fouling remains, the harder removal is.
 - Stains are easily removed for maintenance in wet product after application. Please keep product clean and make frequent maintenance.
 - Please clean product with soft rag or sponge dipped in neutral cleaner, and wash and dry product within 5min. High-efficient cleaning powder shall be used if washing is not clean.
- Maintenance method for drain
 - Please wipe out water steam with soft dry cloth before maintenance.
 - For slight dirt, please clean out with soft cloth or sponge dipped in neutral detergent special for bathtub.
 - For stubborn dirt, please wipe out with alcohol.
 - When cleaning, please make clean as per the notice indicated on detergent vessel. Incorrect application may cause bad effect on human body or product.
 - Please do not use detergent marked with "cidty" or "alkalinity", diluent or chemicals as well as cleaner powder containing coarse particle abrasive powder, nylon brush and sandpaper etc. Otherwise, it may result in bad effect on human body or product.

Notice of maintenance:

- Press overflow cover until drainage cover opened.
- Vertically lift and take out drainage cover.
- For the garbage deposited in drainage fittings and drain, please clean out with brush then wipe out with cloth.
- Press drainage cover into drainage fittings (it will make "click" sound).
- Press the overflow cover to confirm whether drainage cover can be normally opened or closed.

Guaranty

This guaranty is to guarantee the recorded content for free repairing.

During guarantee period, please show this guaranty to sales shop, construction company or TOTO Company for repairing if there is any trouble. (Please contact our company if there is any question)

Name	Model
Customer Add. Post code Tel.	
Sales shop or construction company Add. Post code Tel.	Purchased date
	Guarantee period One year from purchased date

- Stipulation for free repairing:**
- When you correctly operate product as per operation instruction, free repairing will be made according to the time recorded in form if there is any trouble.
 - When free repairing is made during guarantee period, please show this book to repairing person at the same time as entrusting sales shop, construction company or TOTO Company.
 - Please transfer operation instruction when moving.
 - The following situation need charged repairing even if in guarantee period.
 - A. Trouble and damage caused by improper repairing and modification due to mis-operation.
 - B. Trouble and damage caused by moving after installation.
 - C. Trouble and damage caused by fire, earthquake, water flood, thundering, freezing and other natural calamity as well as gas calamity (such as sulphuric acid and hydrochloric acid) and abnormal voltage etc.
 - D. Trouble and damage caused by unqualified fuel, power supply (voltage and frequency) and abnormal water quality.
 - E. Poor use caused by silt and dirty material and damage caused by package.
 - F. Damage caused by other construction faulty.
 - G. Dirty material and water rust caused by improper management.
 - H. The situation without the guaranty.
 - The guaranty is only valid in "220V 50Hz" region.
 - The guaranty will not be published again and please keep it well.
- The guaranty is to guarantee free repairing according to the time and condition recorded in the book. Therefore, the guaranty is not the thing limiting the legal right of customer. Please contact TOTO Company. If there is any question for the repairing at the expiry of guarantee period.
- Manufacturer: Nanjing TOTO Co., Ltd.
 Address: No. 2, Dongcun West Road, Jiangning Development Zone, Nanjing City
- TOTO Ltd. (China)
 Phone of after-sale service: 800-820-9787 (free)
 Fixed phone: 800-820-9787 (free)
 Mobile phone: 400-820-9787
- Cut along the dotted line. Installation manual is submitted to customer.

Jingya wash basin PJS01W/PJS02W/PJS03W/PJS04W

- Thank you to select TOTO Jingya wash basin.
- Please complete proper installation as required by the manual in order to make full use of product function.
- After installation is completed, please instruct operation method to customer and submit the manual to customer.

Notice prior to installation

- Before installation, close water source and reserve water inlet pipe and draining pipe.
 - Thickness of mounting countertop is recommended 8-35mm. Height from countertop to floor is recommended 820mm.
 - Safety precautions must be observed.
- Please carefully read the "Safety precautions" for proper application. Many marks are used in the manual in order to safely and properly install product to prevent human injury or property loss. The marks are described as follows:

Symbol	Meaning
	The symbol means "Forbidden"
	The symbol means "Enforced"

Note	
	No heavy things dropping on wash basin. Otherwise, it may cause damage of wash basin to result in property loss by leakage of wash basin.
	No strong impact to wash basin. Otherwise, it may cause damage of wash basin to result in property loss by leakage of wash basin.
	Please make proper installation as required by construction manual. Construction negligence may cause family property loss by water leakage.
	For installation of cushion materials and fixing button and for installation of wash basin with upper surface down, computerized paper and cardboard etc. shall be placed to prevent wash basin from damaging.

部品清单

Name	Quantity	Type	Remark
Body of wash basin (Draining fittings have been mounted)	1		Subject to practically-purchased product
Fixing parts	4 of each		Parts mounted by customer (fixing wash basin onto countertop)
Connecting parts	1 of each		Parts mounted by customer (connected with draining pipe)
Installation and application manual Certificate	1/1		
Draining fittings	1		Mounted (specially equipped)

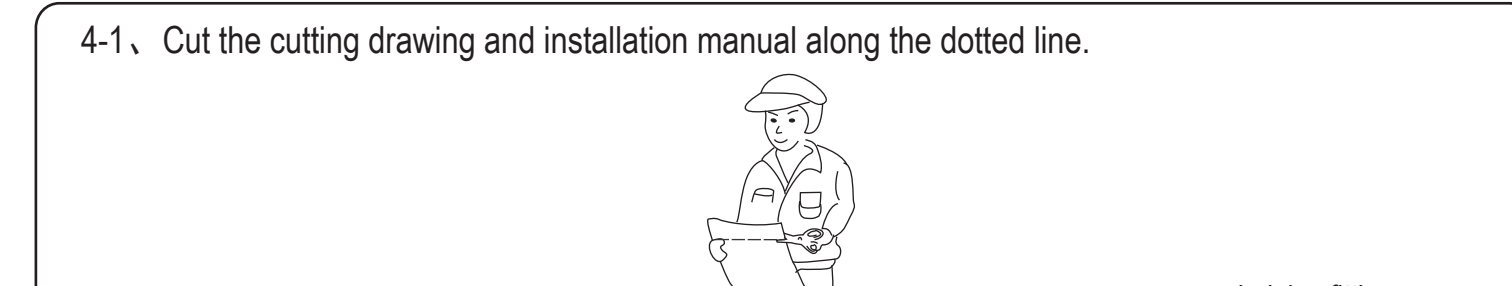
Specifications

Specification	PJS01	PJS02	PJS03	PJS04
Product size (mm)	632*404*154	600*400*120	600*400*120	450*450*160
Product weight (KG)	10	9	8	12
Color	#GW (high light) , #MM (matt)			
Product material	Artificial marble, FRP etc.			
Draining fittings	Special press type draining fittings			
Dimension of connecting draining pipe (provided by TOTO)	φ 31.75 (outer diameter)			

Note: Deviation may occur for weight of wash basin during practical production. Product weight in specifications is average value for reference.

Installation procedure

4-1. Cut the cutting drawing and installation manual along the dotted line.



4-2 Connection between draining fittings of wash basin and water pipe:
 Procedure: Water pipe (4) is gone through nut (5). Then rubber flat gasket (3), stainless steel gasket (2) and rubber gasket (1) are in turn placed on water pipe (4). At last nut (5) is tightened onto draining fittings.

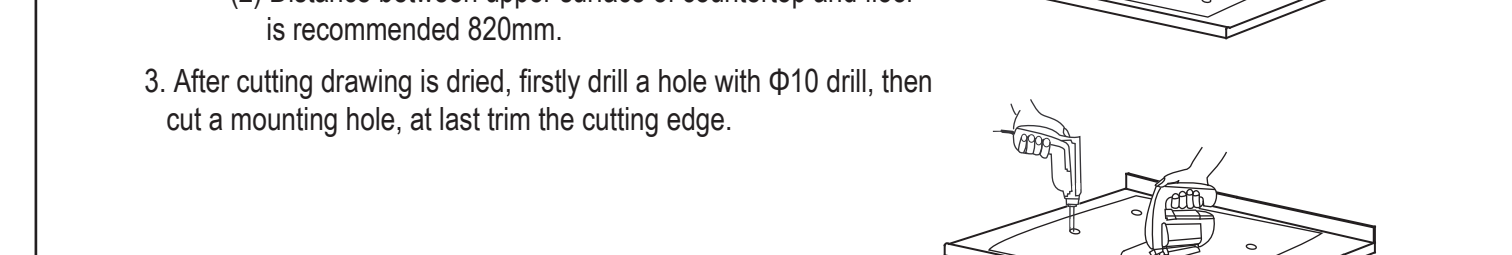
4-3. Mounting countertop of wash basin
 1. Properly cut mounting hole of tap as per the installed tap and countertop dimensions.

2. Cutting drawing is attached on countertop.
 Note: (1) Position of installing drawing attached on countertop depends on mounting tap and position of wash basin on countertop.
 (2) Distance between upper surface of countertop and floor is recommended 820mm.

3. After cutting drawing is dried, firstly drill a hole with φ10 drill, then cut a mounting hole, at last trim the cutting edge.

4. Put wash basin in the opened hole.

5. Use four butterfly fasteners, four M6 spring washers, four M6 big washers and four M6*60 bolts to fasten wash basin and countertop.



6. Inject silica gel into gap between wash basin and countertop.
 Note: (1) Gap shall be filled with silica gel without overflow. Please timely clean the overflowed silica gel on open hole of countertop.
 (2) Epoxy resin adhesive is not allowed.

4-4. Installation of water inlet part and draining part (provided by customer)

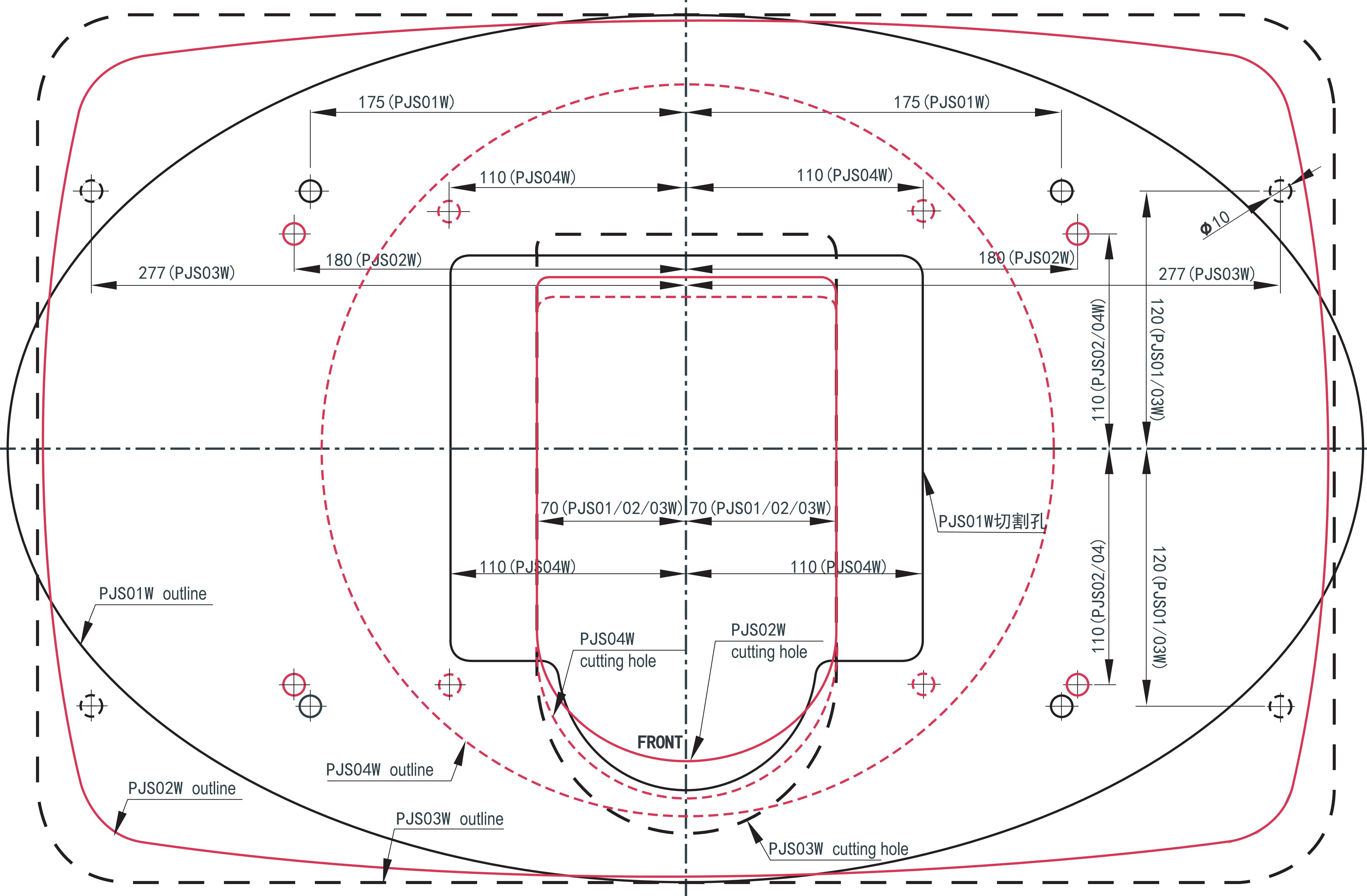


Note: 1. Connection between tap intake and inlet pipe shall ensure inlet pipe firmly connected with nut without distortion.
 2. Never confuse cold water pipe and hot water pipe.

Note: (1) Water inlet pipe shall be firmly connected with draining pipe.
 (2) After installation is completed, wash basin surface, tap and draining fittings shall be wiped clean with soft rag.

Cut along the dotted line. Installation manual is submitted to customer.

洗面器 切割图



Note: There is error during paper printing. Locations of fixing holes need to be confirmed when the above drawing is referred.

TOTO

Intelligent bath product expert

Thank you for choosing us

Comfort at home -----Let all people in the world live in clean and comfortable environment every day. This is the philosophy of TOTO. Both physical appearance and internal structure guide the trend of the times. Thank you for choosing us.

