

TOTO

铜合金壁式单柄双控暗装洗面器水嘴 埋入本体部

TLP02309型
TLP02310型

为了能够发挥产品功能，请细读本安装说明书的内容，并正确地安装。安装后，请务必向客户仔细地说明使用方法。

1 安全上的注意事项 (为了安全起见，请务必遵守)

安装前，务请细读本「安全上的注意事项」的内容，并正确地安装。

- 为了安全、正确的使用产品，防止给您或者他人的人身及财产安全造成损失，此说明书采用了许多标志。各标志与含义如下：
- 需遵守的内容通过以下标志加以区分、说明。

警告 此标志表示无视此标志的内容，进行误操作的话，可能导致人员死亡或重伤。

注意 此标志表示无视此标志的内容，进行误操作的话，可能造成人员伤害或物质财产损失。

禁止 表示不可行，“禁止”之意。左图表示“禁止拆解”。

必须实行 表示必须“强制”实行的内容。左图表示“必须实行”。

警告

冷热水管请勿装反。

否则可能因使用冷水侧时吐热水而造成烫伤。

供水温度不得超过90℃，建议供水温度为60℃。供水管请勿使用蒸汽。

否则可能造成产品使用寿命缩短，易破损、烫伤，以及由于漏水造成家庭财产污损。

切勿安装在玻璃或镜子上。

否则，可能因玻璃或镜子等破损导致受伤，或因漏水而引起家具浸湿等财产损失。

警告

除了本说明书内所记载的项目以外，禁止拆解。

否则，可能因产品性能受损导致烫伤、受伤，或因漏水而引起家具浸湿等财产损失。

注意

不要施加强力或冲击。

否则可能会造成破损，以及因发生漏水而造成的家具浸湿等财产损失。

请勿在室外或可能结冰的地方使用。

否则可能会造成破损，以及因发生漏水而造成的家具浸湿等财产损失。

埋墙本体部应采用合适的螺栓，固定在符合强度要求的墙体或建筑结构体上。

埋墙本体部如固定在土墙或石膏板等低强度墙体上时，可能会因为水嘴本体、手柄部的脱落，或墙体的破损而导致受伤、或因漏水而导致家具浸湿等财产损失。

埋墙本体部树脂套与墙体之间的间隙，请务必采用防水布或涂敷防水胶等防水措施。

否则可能因漏水而造成的家具浸湿等财产损失。

2 规格

供冷水·供热水压力	最低水压	0.05MPa (流动压)
	最高水压	1.0MPa (静压)
	推荐使用压力	0.1~0.5MPa (流动压)
供水温度	4~90℃，建议供水温度60℃。	
使用环境温度	1~40℃	
用途	普通家庭用	
吐水流量	5.0升/分钟 内置定流量阀	
水效等级	1级	

3 安装前的须知

- 为防止误操作而导致的烫伤，冷水水压必须高于或等于热水水压。如必须给热水侧加压时，热水侧压力也必须低于冷水水压。
- 为了减少供热设备到水嘴间的阻力，请按最短距离进行排管。水管须包裹保温材料。
- 使用燃气热水器供热时，因燃气热水器使用条件、供冷水压力的不同，可能会发生燃气热水器不能点火的情况。
- 包装产品之前，因执行通水试验，可能会在产品内部留有残水，但是产品性能上毫无问题。
- 安装本产品前，请务必完全冲洗干净供冷水管和供热水管内的垃圾。否则可能因垃圾堵塞导致出水量减少或放水状态紊乱。

4 零件的确认

务请确认有无下列零件。

埋入本体部

注意

安装时需要下列零件，请勿丢掉。

防水布 (两张)

外观部

水嘴 手柄部件 接头 排水操作部

附件

定位螺丝 (3个) 固定螺丝 (2个) 弹簧垫圈 (2个)

其他

安装说明书

务必交给客户

使用说明书 (对边2.5mm、2.0mm) 内六角扳手

必要的部件 (现场准备)

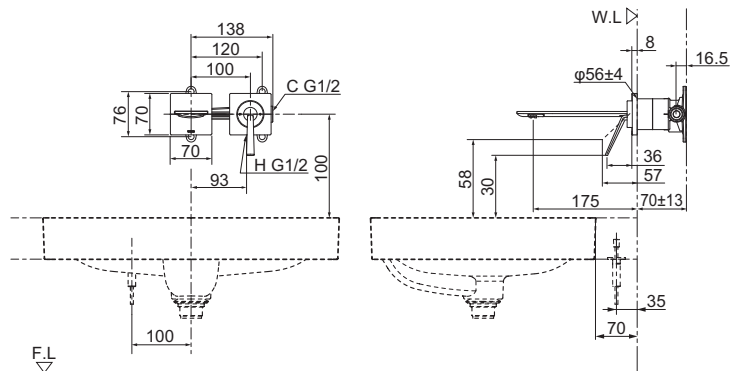
防水胶

(膨胀螺栓) 4个 或者 (木螺丝) 4个

埋入本体部固定用螺丝

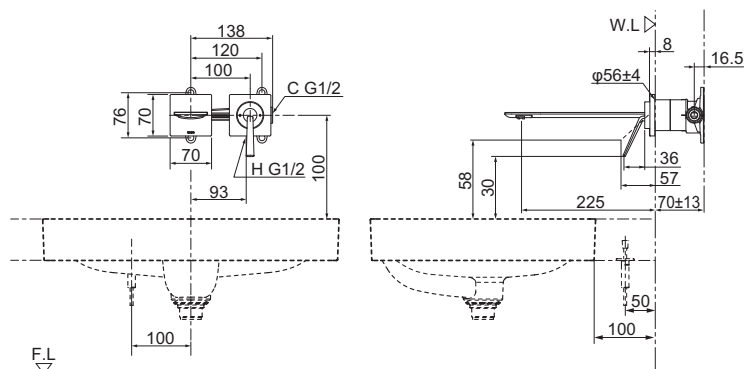
TLP02309
(LS915,LS916)

(mm)



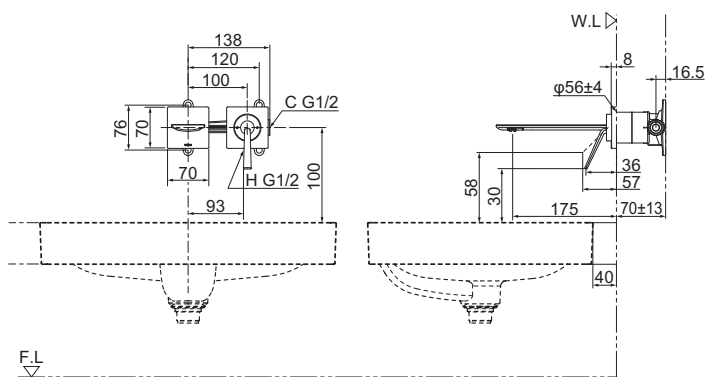
TLP02310
(LS915,LS916)

(mm)



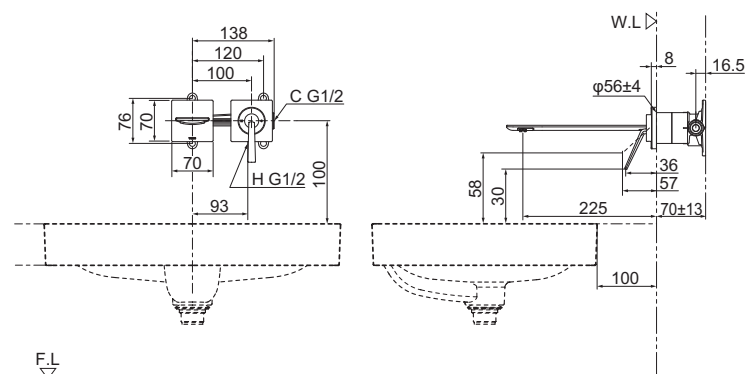
TLP02309

(mm)



TLP02310

(mm)



6-1 安装步骤

1 产品固定前

供冷水管和热水水管内部的清扫

3 埋入本体部的固定

4 墙面施工

2 连接供冷水管·热水水管

1 产品固定前 供冷水管和热水水管内部的清扫

产品固定前

请务必将供冷水管和热水水管内的垃圾或沙土等冲洗干净。

注意

否则因供冷水管和热水水管内的垃圾或沙土堵塞滤网而导致发生下列情况。

- ①吐水量少
- ②难以调节温度

因此,请务必进行供冷水管和热水水管内的清扫。

重要

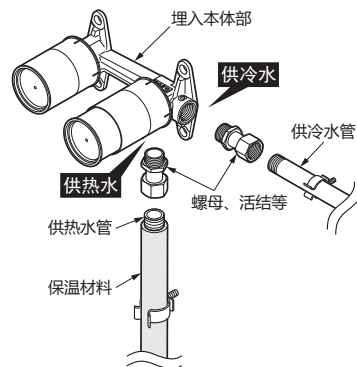
2 供冷水管·热水水管的连接

①准备供冷水管和热水水管。

②供冷水管和热水水管分别连接到埋入本体部。

注意

- 连接施工前,请另行准备市场销售的冷、热水管部件。
- 各接头部位请务必使用冷、热水管专用密封材料进行密封处理。
- 给热水水管包裹保温材料。
- 冷热水管请勿装反



③进水管连接后,向埋入本体部进行通水,以确认连接部有无漏水。

重要

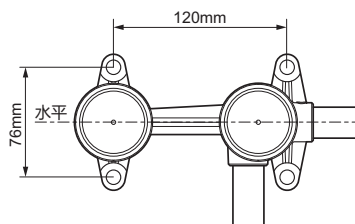
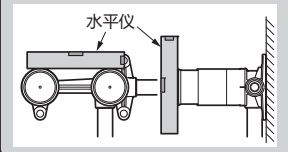
6-2

3 埋入本体部的固定

①如右图所示,面向埋入本体部,从下方接入热水水管、右侧接入供冷水管并保持埋入本体部的水平。

注意

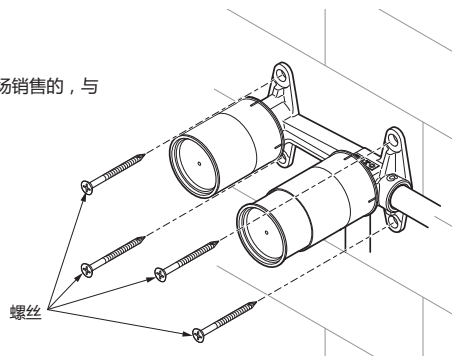
请务必使用水平仪来调整前后、左右的水平状态。



②可使用的安装螺丝直径

凸缘孔径φ10

固定时,请另行准备市场销售的,与凸缘孔径匹配的螺丝。



固定完埋入本体部后,请确认 7 检查项目之(1、2、3)项。

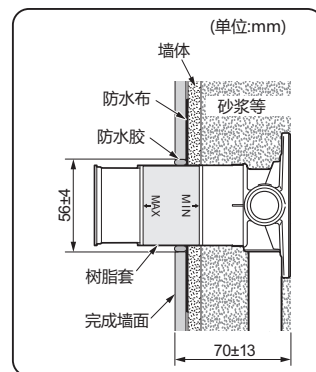
由其他公司负责建筑施工时,以下各项请务必事先告知。

4-1 墙面施工

①必要时可采用砂浆等进行回填处理。(省略回填处理也可施工。)

注意

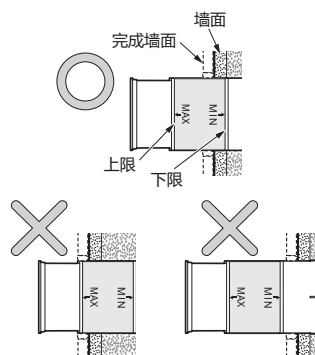
- 请注意避免让砂浆等进入树脂套的内侧。
- 为避免产品摇动,请用管道支架将供冷·热水管及各类管道切实地固定牢固。



②请按完成墙面需处于埋墙本体上标注的上、下限之间的要求,预设墙体。

注意

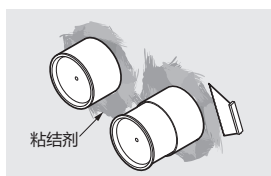
完成墙面超出上、下限范围时,面板将无法正常安装。请各施工方在充分沟通的基础上,按本说明书要求完成各项施工。



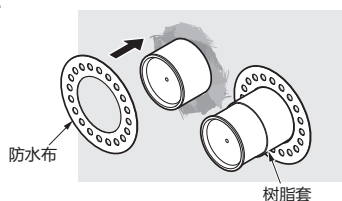
接下页

4-2 墙面施工（续）

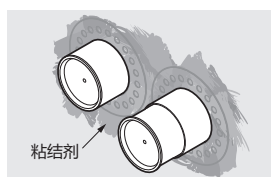
③将墙体材料所指定的粘结剂涂敷在墙面上。



④将防水布穿过树脂套并贴在墙面上。



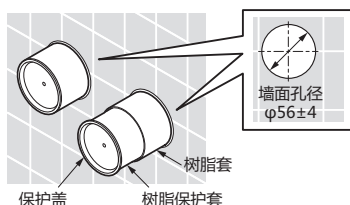
⑤涂敷粘结剂。



⑥使用墙面装饰材完成墙面施工。

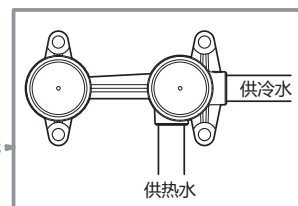
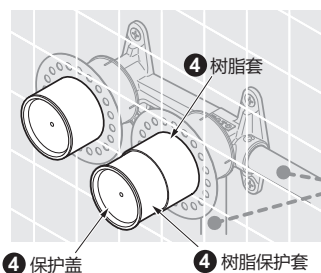
注意

- 墙面装饰材的开口尺寸超过规定范围时，面板将无法正常工作。为此，墙面装饰材的开口尺寸请控制在 $\phi 56 \pm 4$ 以内。
- 请勿拆下树脂套、树脂保护套以及保护盖。



检查项目

安装结束后，请确认下列事项。



埋入本体的安装

① 朝着埋入部的正面，安装埋入部，使供热水管为下侧、供冷水管为右侧。

↳ 6-1 - 2 参照「供冷水管·供热水管的连接」之内容

② 埋入部和配管有无晃动？

↳ 6-1 - 2 参照「供冷水管·供热水管的连接」之内容

↳ 6-2 - 3 参照「埋入本体部的固定」之内容

漏水的确认

请确认有无漏水。

③ 配管连接部有无漏水？

↳ 6-1 - 2 参照「供冷水管·供热水管的连接」之内容

埋入本体部的保养

④ 树脂套、树脂保护套以及保护盖是否安装在产品上？

↳ 6-3 - 4-2 参照「墙面施工（续）」之内容

TOTO

Wall-Mounted Single Handle Faucet (Embedded Type)

TLP02309

TLP02310

Install the product according to this Installation Manual so that the product fulfills its function. When the installation is over, fully explain how to use the single handle faucet to the customer.

1 Safety Precautions (Be sure to follow all precautions for safety sake.)

Please read these Safety Precautions before installation work in order to install the product properly.

- This manual employs various indications in order to install the product properly and to prevent harm to the customer and other people, as well as damage to their properties. The indications and meanings are as follows:

	WARNING This indication means that if the content in the column of this indication is ignored or handled wrongly, death or serious injury may occur.
	CAUTION This indication means that if the content in the column of this indication is ignored or handled wrongly, injury or property damage may occur.

- The contents you must observe are classified into the following symbols; their meanings are explained.

		Indicates things that you must not do as "Prohibited". The left figure indicates that "Disassembly is Prohibited".
		Indicates things that you must do without fail as "Mandatory". The left figure indicates to "Execute it without fail".

WARNING	
	Do not connect the cold water pipe and the hot water pipe reversely. Even if you try to turn on the cold water, the hot water comes out and may scald you.
	Do not use supply water at a temperature higher than 90°C. If you use the water at a temperature higher than 90°C, the water may scald you and the life of the faucet may shorten causing it to break and leak water that may wet household articles and cause damage to your property.
	Do not mount the product on glass, mirrors, etc. Otherwise, the glass, mirror, etc. may break and injure you, and water may leak, wet household articles and cause damage to your property.

WARNING	
	Do not disassemble or remodel the product with other items than what are described in this manual. Otherwise, the water may scald or injure you and the product may break and leak water that may wet household articles and cause damage to your property.

CAUTION	
	Do not subject the product to strong force or impact. Otherwise, the product may break and leak water that may wet household articles and cause damage to your property.
	Do not use the product in any place where freezing can be expected. Otherwise, parts may break and leak water that may wet household articles and cause damage to your property.
	Using appropriate embedment setscrews, be sure to mount the product on a wall or building member that has an enough strength to bear the product. If the embedded part is anchored in walls that do not have enough strength, such as clay walls, chalk walls, etc., the spout and the handle may come off or the wall may break and injure you, and water may leak, wet household articles and cause damage to your property.
	The clearance between the plastic cover of the embedded part and the wall should be assuredly waterproofed with waterproof sheet and silicone. Water may leak, wet household articles and cause damage to your property.

2 Specifications

Cold / Hot water supply pressure	Minimum water pressure	0.05 MPa (Dynamic)
	Maximum water pressure	1.0 MPa (Static)
	Recommended water pressure	0.1~0.5 MPa (Dynamic)
Temperature water supply		4~90°C. Recommended hot water temperature 60°C
Environmental temperature used		1~40°C
Application		For restroom in general house
Water discharge volume		5.0 L/min. constant flow valve incorporated

3 Before Installation

- In order to prevent scalding due to erroneous operation, be sure to set the cold water supply pressure higher than the hot water supply pressure or set them to the same pressure. Even when applying pressure to the hot water side, be sure to set the hot water supply pressure side lower than the cold water side.
- Connect the hot-water supply pipe at a minimum length from the water heater in order to reduce resistance and be sure to wrap the water supply pipe with thermal insulation.
- In the case of an instantaneous hot-water heater, the water heater may not ignite according to the conditions such as performance and water pressure of the water heater.
- Since the flow is examined before packaging the product, some water may remain in the product, but nothing is wrong with the product.
- Before mounting the product, flush dirt and debris in the cold-/hot-water supply pipes completely away. Otherwise, the pipe may become clogged with dirt and debris, causing a reduction in water discharge volume or blocking water discharge.

4 Identification of Parts

Identify the following parts.

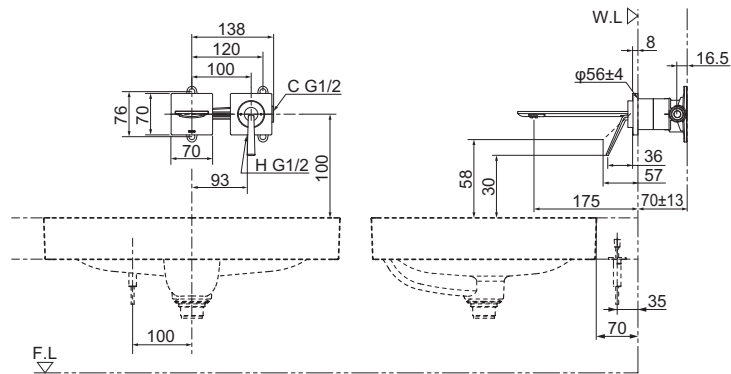
Embedded part	
	Caution The following parts are necessary for mounting. Do not discard them.
Appearance	
Accessories	Others
 Setscrew (x 3) Joint setscrew (x 2) Spring washer (x 2)	
Necessary parts (Procured in the field)	

Continued on the back cover

5 Completion Drawing

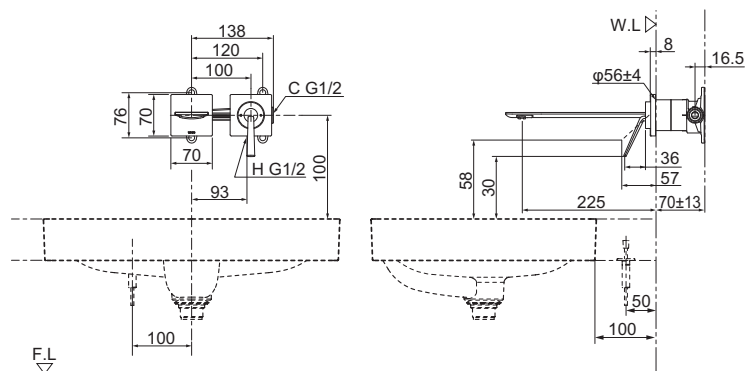
TLP02309
(LS915,LS916)

(mm)



TLP02310
(LS915,LS916)

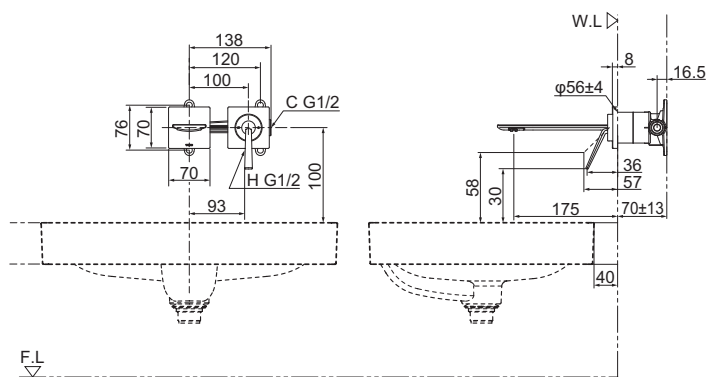
(mm)



5 Completion Drawing

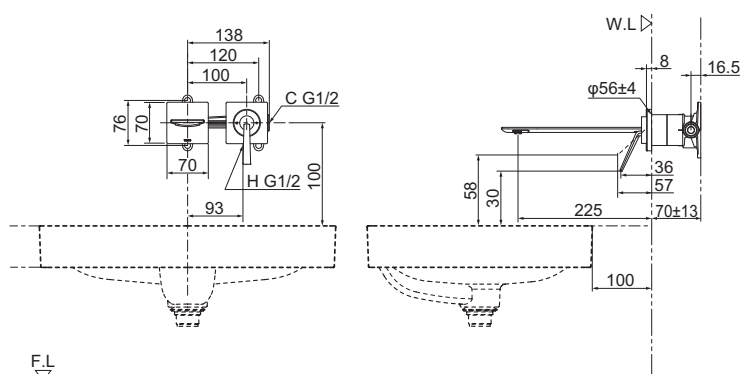
TLP02309

(mm)



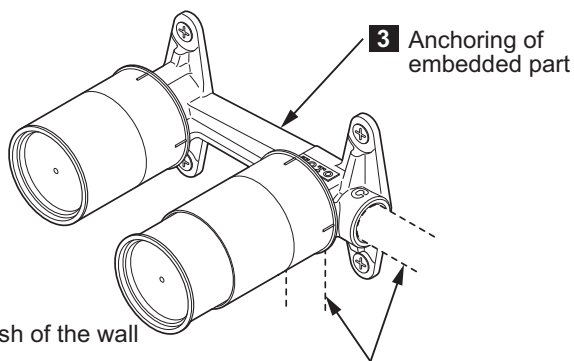
TLP02310

(mm)



6-1 Installation Procedure

- 1** Before anchoring the product
clean the inside of cold-/hot-water supply pipes.



- 4** Finish of the wall

- 2** Connect the cold-/hot-water supply pipes.

- 1** Before anchoring the product
clean the inside of cold-/hot-water supply pipes.

Before anchoring the product
Be sure to wash away dust and sand from inside the cold-/hot-water supply pipes.

Cautions

If the insides of the cold-/hot-water supply pipes are not cleaned, dirt and sand in the cold-/hot-water supply pipes can clog the filter and cause the following trouble.

- (1) Little water volume is discharged.
 - (2) The temperature cannot be adjusted well.
- Be sure to clean the insides of the cold-/hot-water supply pipes.

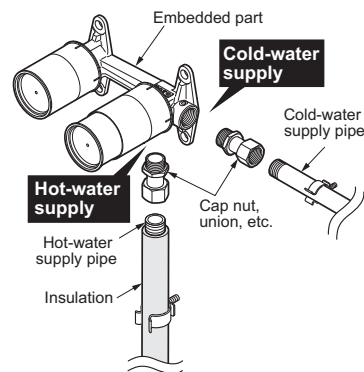
IMPORTANT

- 2** Connect the cold-/hot-water supply pipes.

- (1) Raise the cold-/hot-water pipes.
- (2) Connect the cold-/hot-water pipes to the embedded part.

Cautions

- For this connection, separately prepare commercially available piping materials.
- Be sure to use the pipe sealing materials for connected parts.
- Wrap the hot-water supply pipe with insulation.
- Do not connect the cold-water pipe and the hot-water pipe backwards.



- (3) After connecting the pipes, pass water through the embedded part and make sure that no water leaks from the connected parts.

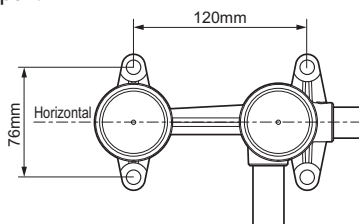
IMPORTANT

Continued in the following item.

6-2

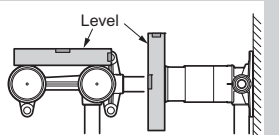
- 3** Anchoring of the embedded part

- (1) As the example shown in the right figure, mount the embedded part in a horizontal position so that the hot-water supply pipe comes to the lower side and the cold-water pipe comes to the right side as seen from the front side of the embedded part.

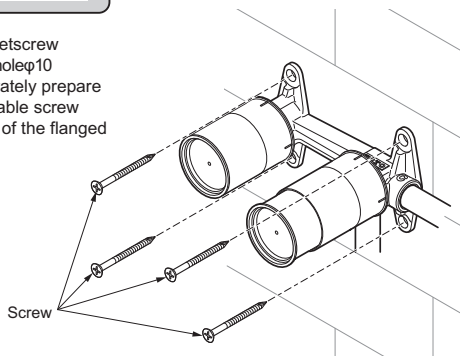


Caution

Be sure to level the front and back and the right and left using a level.



- (2) Diameter of usable setscrew
Diameter of flanged hole $\phi 10$
For anchoring, separately prepare a commercially available screw that fits the diameter of the flanged hole.



After anchoring the embedded part, confirm the check items (1, 2, 3) in 7.

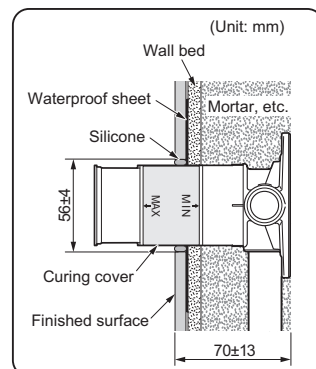
If other constructor performs the construction work, send the following items to the constructor.

- 4-1** Finish of the wall

- (1) Refill the wall with mortar according to necessity.
(The product can be installed without refilling the wall.)

Cautions

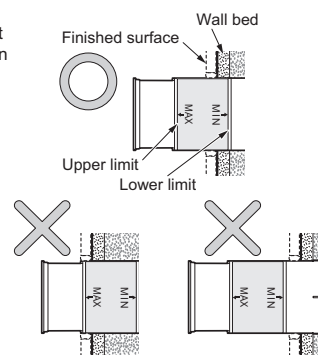
- Pay attention not to get mortar, etc. inside of the curing cover.
- Anchor the cold-/hot-water supply pipes and piping sufficiently using pipe holders, etc. so that the product is immobile.



- (2) Install the wall bed so that the finished surface comes between the upper limit and the lower limit that are indicated on the curing cover.

Caution

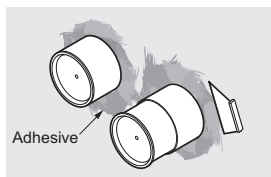
If the finished surface exceeds the finishing range, the plate, etc. cannot be mounted normally. Therefore, sufficiently discuss about finishing of the wall with the customer.



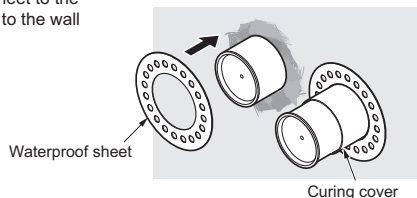
Continued on the back cover

4-2 Finishing of the wall (Continued)

- (3) Apply the adhesive designated for the wall material to the wall bed.



- (4) Attach the waterproof sheet to the curing cover and affix it to the wall bed.



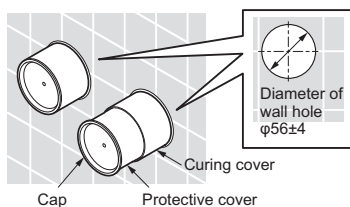
- (5) Apply adhesive.



- (6) Finish the wall with finishing material.

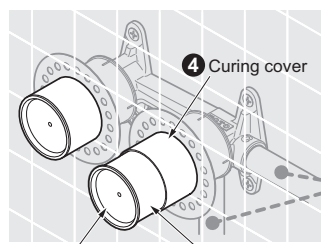
Cautions

- If the opening of the finishing material exceeds the specified size, the plate, etc. cannot be mounted normally. Therefore, make the diameter of the opening of the wall finishing material $\phi 56 \pm 4$.
- Do not remove the curing cover, the protective cover or cap.



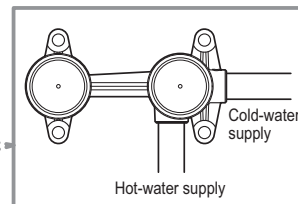
Checking Items

When the installation is over, check the following items.



④ Cap

④ Protective cover

**Mounting of the embedded part**

- ① Is the embedded part mounted so that the hot-water supply pipe comes to the lower side and the cold-water pipe comes to the right side as seen from the front side of the embedded part?

Refer to the
⑥-1 - ② "Connection of the cold-/hot-water supply pipes".

- ② Is there any looseness in the embedded part and piping?

Refer to the
⑥-1 - ② "Connection of the cold-/hot-water supply pipes"

⑥-2 - ③ "Anchoring of the embedded part".

Checking water leakage

Check if water leaks.

- ③ Is there any water leaking from the pipe connections?

Refer to the
⑥-1 - ② "Connection of the cold-/hot-water supply pipes".

Curing of the embedded part

- ④ Are the curing cover, the protective cover and the cap attached?

Refer to the
⑥-3 - ④-2 "Finishing of the wall" (Continued).